



Interreg

Latvija-Lietuva

European Regional Development Fund



EUROPEAN UNION

WHAT IS NEW IN THE INTERREG V-A LATVIA- LITHUANIA PROGRAMME 2014-2020

Launch event
11 May 2016

Ināra Buda

Representative of Managing Authority

*Ministry of Environmental Protection and Regional Development of the
Republic of Latvia*

Deputy director, Development Instruments Department



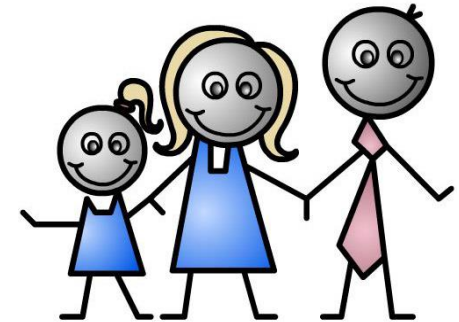
ADOPTION

- Programme was adopted on 30 November 2015 by Commission Decision C(2015) 8476



OBJECTIVE OF THE PROGRAMME

➔ Contribute to the sustainable and cohesive socio-economic development of the Programme regions by helping to make them more competitive and attractive for living, working and visiting.



WHAT IS NEW FOR 2014-2020

- ✓ Joint Secretariat is located in the Ministry of Environmental Protection and Regional Development of the Republic of Latvia
- ✓ Branch Office of Joint Secretariat is established in Vilnius
- ✓ Use of electronic monitoring system
- ✓ New design webpage and logo
- ✓ Various simplifications for projects – electronic application and reporting, preparation costs for technical documentation and lump sum 1000 EUR ERDF related to preparation of application form, possibility to choose flat rate for Staff costs and flat rate applied for Office and administration costs.

PROGRAMME FOCUS

- ✓ Programme is **thematically concentrated**
- ✓ Programme is **result oriented** and Projects are expected to achieve **tangible results** relevant to the target groups of the project and which will have **long lasting effect** on the Programme area
- ✓ Programme progress will be **measured** against set **baseline and target values** for each Programme **result indicator** in **2018** and **2023**, thus projects need to concentrate on achievement of project main results and outputs
- ✓ During Programme implementation, **impact evaluation** will be carried out to assess how the ERDF co-financing has contributed to the achievement of Programme objective



PROGRAMME PRIORITIES AND RESULTS



SUSTAINABLE AND CLEAN ENVIRONMENT THROUGH COOPERATION



Number of overnight stays of visitors in the Programme area
~5,6 MEUR ERDF

Number of organisations jointly contributing to environmental resource management
~3,5 MEUR ERDF

Number of households not facing pollution, grime and other municipal environmental problems
~4,9 MEUR ERDF



SUPPORT TO LABOUR MOBILITY AND EMPLOYMENT



Number of newly established businesses per year
~4,5 MEUR ERDF

Number of people receiving upgraded skills matching labour market needs per year
~4,5 MEUR ERDF

Number of commuters per day
9 MEUR ERDF



SOCIAL INCLUSION AS A PRECONDITION TO TERRITORIAL DEVELOPMENT



Number of people benefitting from more accessible, efficient social inclusion measures and social services
~6,7 MEUR ERDF

Number of households not facing pollution, grime and other municipal environment problems
~3,6 MEUR ERDF



IMPROVED QUALITY OF LIVING THROUGH EFFICIENT PUBLIC SERVICES AND ADMINISTRATION

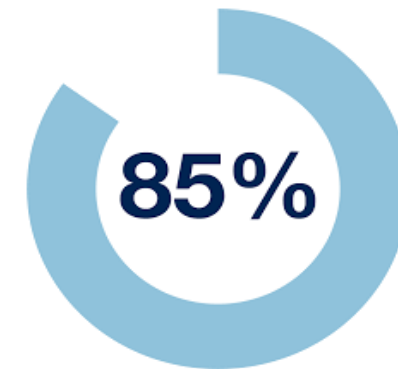


Number of solutions improving public services
~9,3 MEUR ERDF

AVAILABLE BUDGET AND CO-FINANCING RATE

✓ Total **ERDF co-financing** for projects is **EUR 51.6 million**

✓ Eligible project activities are co-financed by the ERDF at a rate of



✓ **Project partners** have to provide their own **financial contribution** of **15%**

WHO CAN APPLY

- ✓ Public authorities (national, regional, and local authorities)
- ✓ Public equivalent bodies, meaning any legal body governed by public or private law
- ✓ NGOs

**PROJECTS SHOULD BE IMPLEMENTED IN CROSS BORDER PARTNERSHIPS
WITH CLEAR CROSS BORDER ADDED VALUE**



SUBMISSION OF PROJECT APPLICATIONS

The 1st call for proposals is open from **29 April 2016 until 5 August 2016 at 12:00**

- ✓ Single step procedure – full application should be submitted
- ✓ Project application is done via the electronic monitoring system (eMS)

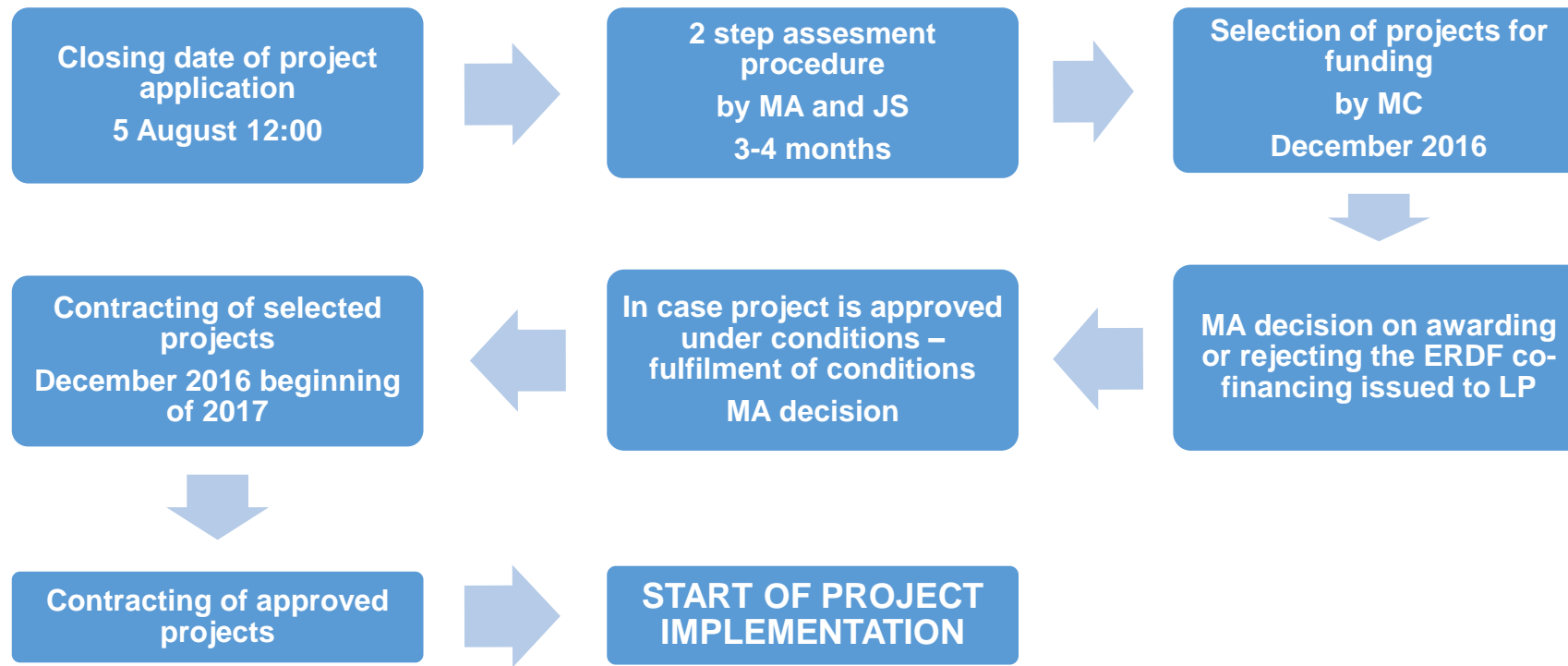


INTERACT is co-financed by the European Regional Development Fund

eMS also allows projects to perform all exchange of information on project implementation with programme management bodies electronically

! Applicant pack for 1st call for proposals is available on the Programme website www.latlit.eu alongside with access to the eMS

PROJECT APPLICATION ASSESSMENT AND SELECTION



PROGRAMME MANAGEMENT BODIES

Monitoring Committee

Managing Authority

also performing functions of
Certifying Authority

Ministry of Environmental Protection and
Regional Development

Audit Authority

Ministry of Environmental Protection
and Regional Development

Joint Secretariat

staff selected jointly by representatives of
Latvian and Lithuanian National Authorities

Ministry of Environmental Protection and
Regional Development and Branch Office in
Vilnius

Financial Control

in Latvia – centralised system,
functions performed by the Ministry of
Environmental Protection and Regional
Development

in Lithuania – decentralised system
established by the Ministry of the
Interior of the Republic of Lithuania

NEW PROGRAMME WEBSITE AND LOGO

www.latlit.eu



Check regularly for new information about Programme activities!



 [Join us on Facebook!](https://www.facebook.com/LatviaLithuaniaProgramme)
[facebook.com/LatviaLithuaniaProgramme](https://www.facebook.com/LatviaLithuaniaProgramme)

INFORMATION SEMINARS AND SUPPORT

LATVIA	LITHUANIA
JELGAVA, May 18	TELŠIAI, May 19
DAUGAVPILS, May 24	ANYKŠČIAI, May 25
KULDĪGA, May 31	KAUNAS, May 26

Topics covered:

- ✓ Overall information on Programme (priorities, possible supported activities, requirements for projects, information on assessment criteria and assessment procedures)
- ✓ Financial management (eligibility of costs, project budget)
- ✓ Information and communication requirements
- ✓ Preparation and submission of project application form in the eMS
- ✓ Questions & answers
- ✓ Individual consultations

Register for seminars on Programme webpage www.latlit.eu!

Thank you for your attention!

For more information

✓ contact Joint Secretariat
latlit@varam.gov.lv

✓ visit webpage
www.latlit.eu

Detailed contact information of JS available
www.latlit.eu/contacts