

**Interreg**



Co-funded by  
the European Union

**Latvia – Lithuania**

# Priority II. Green, resilient and sustainable development

Thematic workshop for potential applicants

*26 January 2023, Klaipėda*

*2 February 2023, Daugavpils*

# The Programme Manual

# II. Green, resilient and sustainable development



Specific objectives:

---

2.1 Promoting climate change adaptation and risk prevention

**Available ERDF: 6 900 001 EUR**

---

2.2 Enhancing protection and preservation of nature, biodiversity and green infrastructure, and reducing pollution

**Available ERDF: 6 600 00 EUR**

---

# II. Green, resilient and sustainable development

Interreg



Co-funded by  
the European Union

Latvia – Lithuania



**Max project size:**  
600 000 EUR ERDF  
(750 000 EUR total project)

Project must contribute to **one** specific objective of the Programme!

Projects under priority II must have a **direct positive impact** to the sustainable development horizontal principle of the Programme.

**Interreg**



Co-funded by  
the European Union

**Latvia – Lithuania**

## Specific objective 2.1

Promoting climate change adaptation and risk prevention and resilience taking into account ecosystem- based approaches

Thematic workshop for potential applicants on  
priority II “Green, resilient and sustainable development”

*26 January 2023, Klaipėda  
2 February 2023, Daugavpils*

# Challenges in the region

## *Programme document:*

The effects of climate change in the Programme area include **extreme weather risks** (high risk of storm, snowfall, and drought), **fluvial and coastal flooding risks** (significant risk in Latvia and high risk in Lithuania) and **forest-fire risks** (significant risk in Latvia and high risk in Lithuania), which are rapidly increasing in the last decade. There is a **necessity of lowering the impact** of the terrestrial activities **on the marine environment**. **Coastal erosion**, caused by rising sea level and increased storminess, is a particularly severe problem in Latvia and Lithuania and can have severe consequences on tourism and recreation sector. Climate change also leads to the **spread of invasive alien species** and **plant, animal and human diseases**, decreasing the resilience of the socio-ecological systems (CASCADE, 2020; DR REGIO, 2019).





# Challenges in the region

**extreme weather risks**  
**fluvial and coastal flooding risks**  
**forest-fire risks**  
**necessity of lowering the impact  
on the marine environment**  
**coastal erosion**  
**spread of invasive alien species**  
**plant, animal and human diseases**

Projects must address these areas





## Specific objective 2.1

# Promoting climate change adaptation and risk prevention and resilience taking into account ecosystem- based approaches

### The aim

**to enhance knowledge** of climate impacts and facilitate a **holistic and systems-based approach** to the adaptation to the climate change in the cross-border area.



### The activities should result in:

- enhanced knowledge,
- transferred good practice,
- strengthened cooperation among emergency services.

**Cooperation of institutions and stakeholders** through planning, implementation, monitoring and other activities is expected.



# Indicative supported activities

Interreg



Co-funded by  
the European Union

Latvia – Lithuania

Joint management of  
cross-border natural  
sites

Flood protection and  
prevention

Joint monitoring

Cooperation among  
emergency services

Training, exchange  
of experience,  
practical  
assessments

Education and  
awareness raising



**Programme  
Manual section 3.2**

## Indicative supported activities

# Eco-system based joint management solutions of cross-border natural sites

- For adaptation to climate change and disaster risk prevention, resilience
- Must address
  - extreme weather risks,
  - drought risks,
  - fluvial and coastal flooding risks,
  - sand and sediment accumulation,
  - forest fire risks,
  - coastal erosion
  - spread of invasive alien species
  - spear of diseases.



Photo by vilnis Izotovs:

<https://www.pexels.com/photo/aerial-photography-of-a-lake-7449710/>

# Cross-border natural sites

Interreg

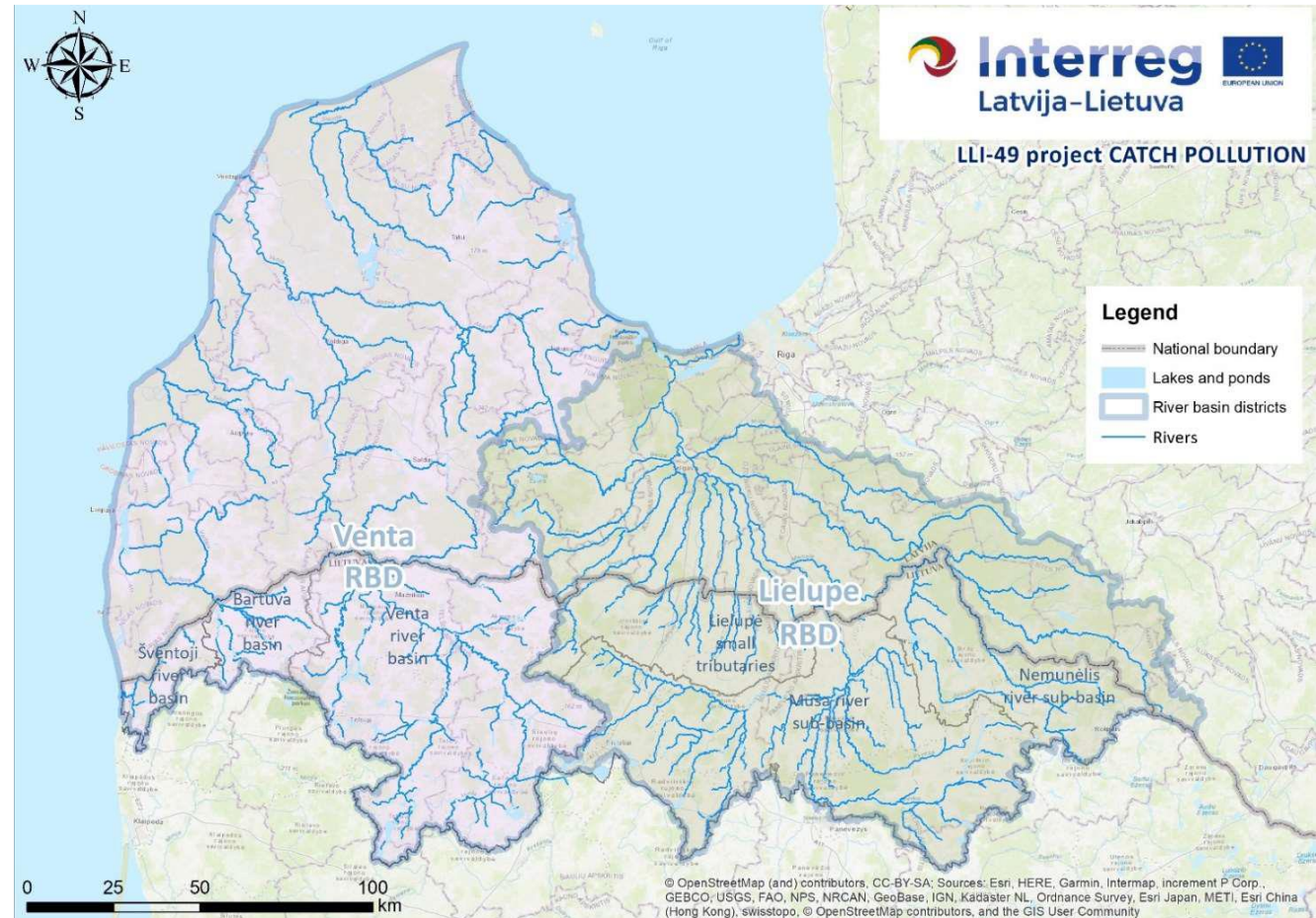


Co-funded by  
the European Union

Latvia – Lithuania

## Examples

- Wetlands, forests, meadows, etc.
- Water bodies
- Coastal zone
- Cross-border catchments
- ...





# Indicative supported activities

## Nature-based solutions for flood protection and prevention infrastructure

### Nature-based solutions

- flood plains
- ecosystem restoration
- afforestation
- natural water retention measures
- other green (or blue) infrastructure measures

Must have a direct benefit for CC adaptation and risk prevention.





# Green/ blue/ gray?

- **Green Infrastructure** based on the principle that
  - protecting and enhancing nature and natural processes, and
  - the many benefits from nature,
  - consciously integrated into spatial planning and territorial development.
    - *The EU Strategy on Green Infrastructure*
- **Blue elements** of infrastructure – watercourses, ponds, lakes and storm drainage.
- **Grey infrastructure** – single-purpose infrastructure.





# For inspiration

Interreg



Co-funded by  
the European Union

Latvia – Lithuania

North Sea Region Interreg project **BEGIN**  
Cooperation among 10 cities and 6 research institutions



[northsearegion.eu/begin/](http://northsearegion.eu/begin/)

<https://youtu.be/J1oUwbMnp6U>



# Indicative supported activities

## Joint monitoring

- **to enhance the knowledge** of climate change impacts and
- **facilitate a holistic and systems-based approach** to climate change adaptation

For example:

- mapping and monitoring of species, habitats, and ecosystems,
- monitoring of storm frequency and intensity, and sea level rise,
- development and implementation of new indicators and monitoring methodologies, etc.

- LLI-49 Catch pollution, LLI-249 EcoFlow, LLI-533 TRANSWAT
- LLI-306 Open landscape, LLI-310 Lamprey, LLI-472 Urb-Area, LLI-476 Save past for the future, LLI-525 ESMIC, LLI-527 Medwater





# Indicative supported activities

## Cooperation among emergency services

- to built disaster resilience

For example:

- joint actions to strengthen **capacity** of cross-border emergency services to combat environmental disasters resulting from climate changes.



- LLI-195 ATOM
- LLI-267 Emerg\_Tech

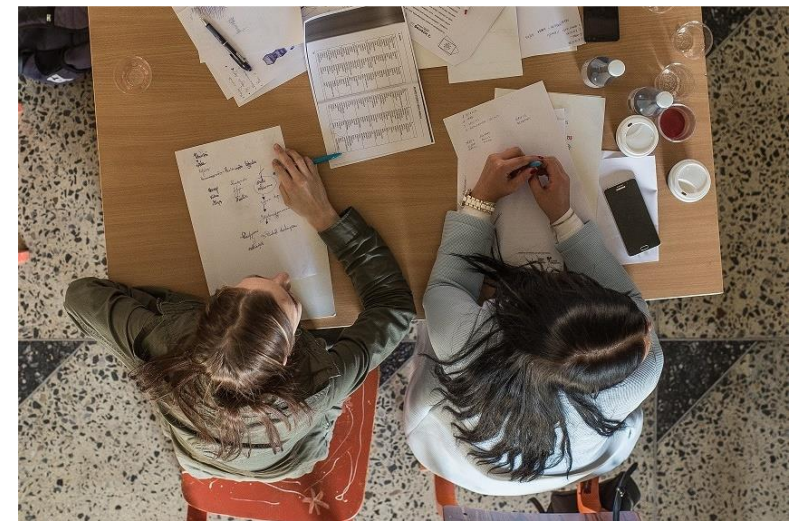


## Indicative supported activities

### Training, exchange of experience, practical assessments, etc.

**capacity building of organisations**  
in the field of adaptation to climate change and disaster risk prevention, resilience,  
**taking into account ecosystem-based approaches.**

- joint trainings, workshops, experience exchange visits for
  - promotion of new knowledge, transfer of methods and solutions,
- identification and estimation of ecosystem services and values, etc.



# Indicative supported activities

## Education and awareness raising

- **addresses general public on**
  - environmental and climate change risks, disasters
  - their negative impacts
  - actions to combat them

*information campaigns, educational materials, etc.*





# Specific objective 2.1

## Specific rules (1)

- 1) Project must demonstrate cross-border cooperation nature.
- 2) Infrastructure and equipment are eligible only if
  - complement soft and cooperation activities, and
  - are essential for reaching project objectives and results.
- 3) Flood prevention measures and afforestation, and activities in specially protected nature territories are subject to initial environmental impact assessment or technical documentation.
- 4) Restoration of drainage systems is not eligible under the s.o. 2.1.

# Specific objective 2.1

## Specific rules (2)

- 5) Solutions and actions should be clearly justified, ready to be implemented and used during and/or after the end of the project.
  - if any climate change adaptation and risk prevention activities are planned
    - submit permits or support letters from responsible nature management institutions.
  
- 6) Awareness raising is recommended.

# Specific objective 2.1

## Specific rules (3)

- 7) If documentation will be developed:
  - justify the need,
  - explain how the LP/PPs or direct stakeholders will use it during or after the project,
  - submit letter of support from stakeholders or responsible authorities.
  
- 8) If stakeholders directly using project results are not involved in the project:
  - provide information how the direct stakeholders will use the results during/after the project,
  - submit letter of support from the stakeholders on the use of the results (recommended).

# Specific objective 2.1

## Specific rules (4)

- 9) If ICT products will be developed:
- submit approval from relevant authorities on development of the products, if required by national regulation.
    - In Latvia: Cabinet of Ministers Regulation No. 597 of 31 August 2021 “Procedures for Supervising Development Projects for State Information Systems”.